



## IN THIS EDITION

COVID-19 Employment Impact in Nipissing and Parry Sound

Impact of COVID-19 on the Local Labour Market - Northeastern Ontario

Impact of COVID-19 Pandemic in Ontario

## JOBS REPORT SEPTEMBER 2020

### TOTAL NUMBER OF JOB POSTINGS

351

Nipissing

110

Parry Sound

46

from August

1

from August

### TOP INDUSTRY WITH VACANCIES

Nipissing

Health Care and Social Assistance (19.1%)

Parry Sound

Health Care and Social Assistance (37.3%)

To view the full report, visit our website [www.thelabourmarketgroup.ca](http://www.thelabourmarketgroup.ca)

T. 705.474.0812  
Toll Free 1.877.223.8909  
F. 705.474.2069

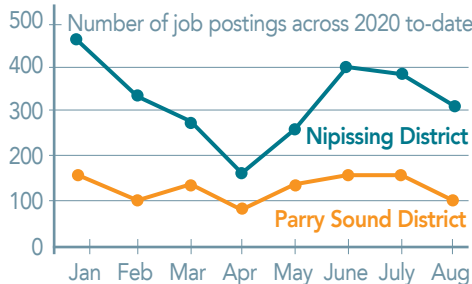
101 Worthington St. East  
Suite 238  
North Bay, Ontario

The Labour Market Group is funded by:

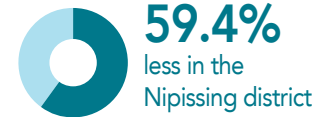


## COVID-19 EMPLOYMENT IMPACT IN NIPISSING AND PARRY SOUND

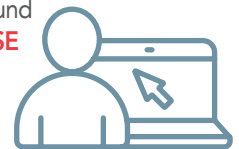
### Employment:



Job postings in April 2020:



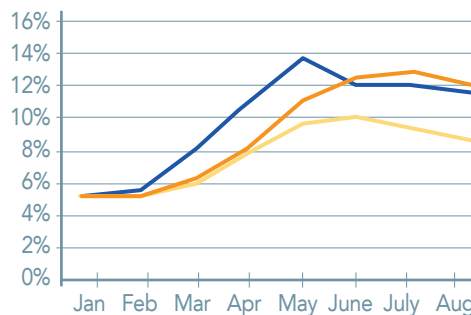
As expected, Nipissing & Parry Sound districts saw a **MASSIVE DECREASE** in the number of job postings, as well as a shift in the types of jobs that were being recruited for.



This was followed by a **recover** in June, where we saw an **increase** in the 2020 numbers, when compared to 2019.

## IMPACT OF COVID-19 ON THE LOCAL LABOUR MARKET - NORTHEASTERN ONTARIO

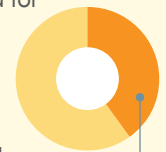
CHART 1: Unemployment rate, Ontario monthly, Ontario 3-month moving average, Northeast Ontario 3-month moving average, January to August 2020



Ontario 1 month    Ontario 3 month    NE Ontario

### SIDE NOTE:

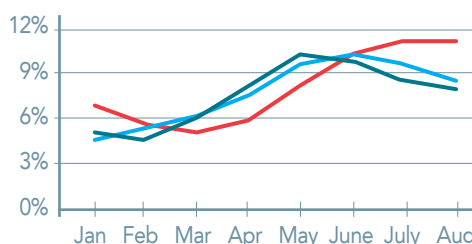
In 2016, Greater Sudbury and Sault Ste. Marie accounted for approximately 45% of the employed labour force in Northeast Ontario;



Nipissing and Parry Sound accounted for approximately 40% of the remainder of Northeast Ontario, once Greater Sudbury and Sault Ste. Marie are removed, and so an analysis which relies on the rest of Northeast Ontario will only be an approximation of what is happening in Nipissing and Parry Sound.

TABLE 2: Unemployment rate, three-month moving average, Sault Ste. Marie, Greater Sudbury and the rest of Northeast Ontario, January to August 2020

	JAN	FEB	MAR	APR	MAY	JUN	JUL	AUG
Sault Ste. Marie	6.8%	5.6%	5.1%	5.8%	8.2%	10.2%	11.1%	11.0%
Greater Sudbury	4.8%	5.5%	6.3%	7.5%	9.5%	10.1%	9.6%	8.6%
Rest of NE Ontario	5.0%	4.8%	6.2%	8.2%	10.1%	10.0%	8.6%	7.9%



Based on Table 2, one can see that the unemployment rate in the rest of Northeast Ontario peaked slightly before the unemployment rates peaked in Greater Sudbury and Sault Ste. Marie and since then has declined more (indeed, the rate in Sault Ste. Marie appears to have stayed high).

# COMING SOON!

## NEW LABOUR MARKET GROUP WEBSITE



# DAWN

DIVERSITY AT WORK NIPISSING  
CULTURAL DIVERSITY TRAINING FOR EMPLOYERS

The Diversity at Work Nipissing (DAWN) program is a client driven employment related program that strives to meet the needs of Newcomers to Canada while assisting the local economy grow by becoming more Inclusive and Diverse.

149 Main St East., North Bay  
T: 705.476.3234 [yesnorthbay.com](http://yesnorthbay.com)  
[souli.larki@yesnorthbay.com](mailto:souli.larki@yesnorthbay.com)

@dawnnorthbay  
 @dawnnorthbay



Questions or concerns?  
Feel free to contact us at  
[info@thelabourmarketgroup.ca](mailto:info@thelabourmarketgroup.ca)

T. 705.474.0812  
Toll Free 1.877.223.8909  
F. 705.474.2069

101 Worthington St. East  
Suite 238  
North Bay, Ontario

The Labour Market Group is funded by:



## IMPACT OF COVID-19 PANDEMIC IN ONTARIO



**UNEMPLOYMENT BY GENDER AND AGE.** Unemployment increased proportionately more among youth and, in most months, among females as well (Table 3). This combination of gender and age expressed itself in a severe unemployment rate of 40.6% in May 2020 among females aged 15 to 19 years old. Clearly, the loss of part-time jobs had a significant impact on youth and females.

GENDER	AGE	FEB	MAR	APR	MAY	JUN	JUL	AUG
ALL	ALL	5.5%	8.0%	11.3%	13.9%	12.3%	12.2%	11.8%
MALE	15-24	13.2%	16.5%	23.9%	31.0%	28.2%	30.7%	28.5%
	25+	4.8%	6.5%	9.6%	10.4%	7.8%	7.9%	7.8%
FEMALE	15-24	8.6%	16.4%	23.9%	35.3%	33.0%	27.2%	25.4%
	25+	4.5%	7.3%	9.6%	11.4%	10.6%	10.2%	10.2%

Table 3: Ontario unemployment rate, by gender and age segments, February to August 2020



**UNEMPLOYMENT BY EDUCATION.** Table 4 illustrates the varying impact of the pandemic on adults (aged 25 years and older) based on their level of educational attainment. While there is a clear pattern of higher levels of unemployment the lower the level of educational attainment, the figure for these adults are still considerably lower than the unemployment rates experienced by youth.

Level of Education	FEB	MAR	APR	MAY	JUN	JUL	AUG
ALL LEVELS	4.7%	6.8%	9.6%	10.9%	9.1%	9.0%	9.0%
No certificate	6.0%	9.3%	12.5%	16.6%	12.5%	11.3%	11.2%
High school	5.1%	7.8%	12.6%	14.5%	10.8%	10.9%	11.1%
College or trades	4.4%	6.6%	10.1%	10.9%	9.4%	8.1%	8.2%
University	4.5%	6.3%	7.4%	8.4%	7.6%	8.5%	8.2%

Table 4: Ontario unemployment rate, by educational attainment, residents aged 25 years and older February to August 2020

### CONSEQUENCES FOR BUSINESS

Revenues

52%

Half of Ontario businesses experienced a year-over-year drop in revenue between April 2019 and April 2020 of over 30%.



Percentage of Ontario businesses experiencing a change in business revenue from April 2020 compared to April 2019

19.9%  
Decreased less than 30%

34.2%  
Decreased more than 50%



6.8%  
Increase

19.9%  
No Change

17.4%  
Decreased 30% to less than 50%



Three sectors had more than half of their businesses experience a decrease in revenues of over 50%:

62.3%

Accommodation and Food Services



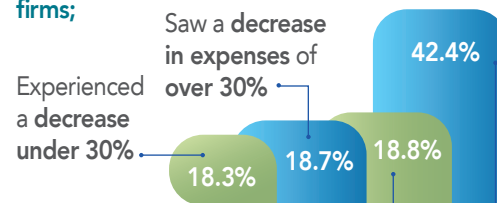
59.9% Arts, Entertainment and Recreation

50.9%

Construction



On the other hand, the trend for expenses did not match that for revenues. Among Ontario firms;



Of businesses cited an increase in expenses

Reported no change in their expenses

Small firms were more likely to experience greater percentage losses than large firms.

Statistics Canada, Canadian Survey on Business Conditions (May 2020), Table 33-10-0253-01