



IN THIS EDITION

Income in Canada

Top 5 Occupations in Nipissing and Parry Sound Districts

STATS 101: What is Labour Market Information?

NOW AVAILABLE
2017 **employerone**
SURVEY



VACANCY REPORT SEPTEMBER 2017

TOTAL NUMBER OF JOB POSTINGS

Nipissing **444**

Parry Sound **127**

TOP INDUSTRY WITH VACANCIES

Nipissing

Administrative & Support,
Waste Management &
Remediation Services (20.5%)

Parry Sound

Health Care and Social
Assistance (18.9%)

To view the full report, visit our website
www.thelabourmarketgroup.ca

T. 705.474.0812

Toll Free 1.877.223.8909

F. 705.474.2069

101, Worthington St. East
Suite 238
North Bay, Ontario

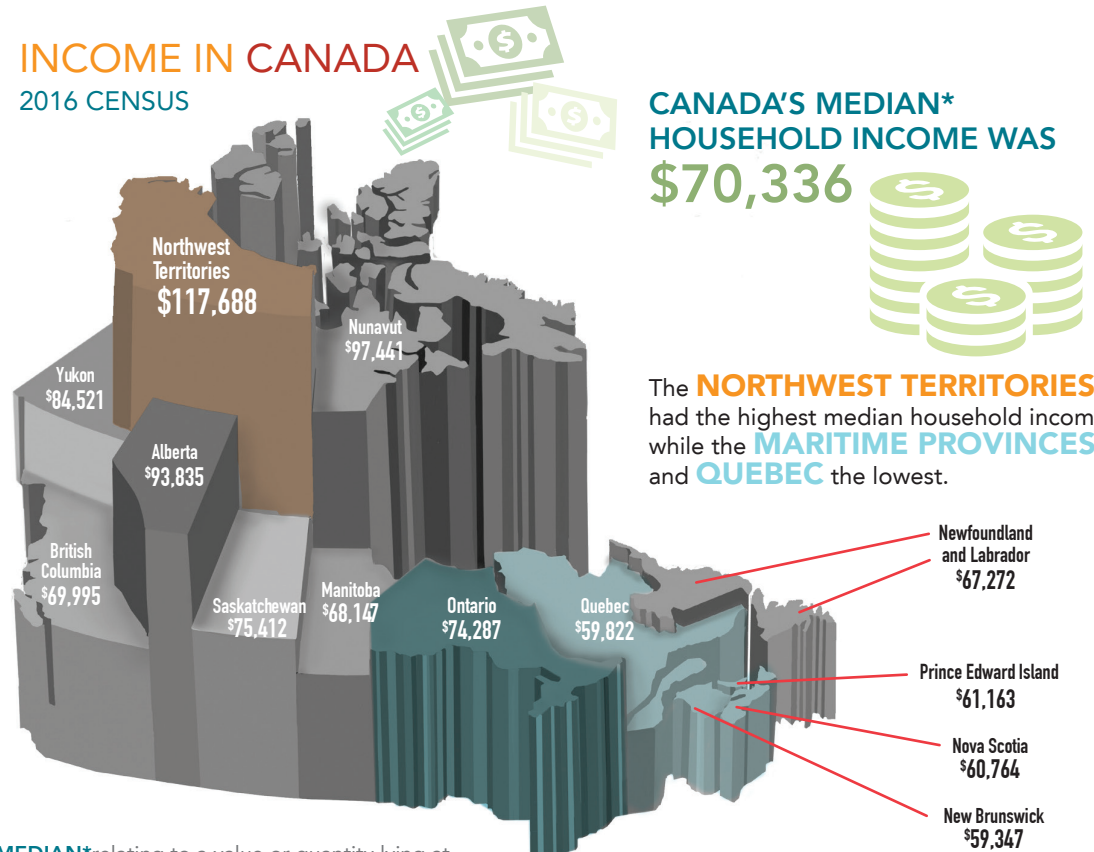
1, College Dr.
Parry Sound, Ontario

The Labour Market Group is funded by



INCOME IN CANADA

2016 CENSUS



CANADA'S MEDIAN*
HOUSEHOLD INCOME WAS
\$70,336



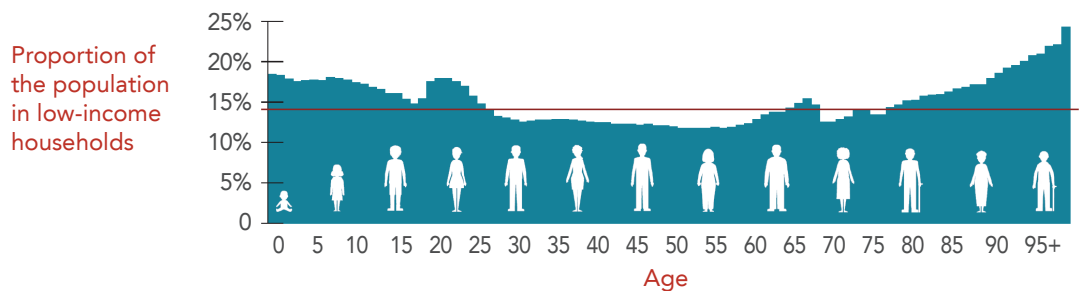
The **NORTHWEST TERRITORIES** had the highest median household income, while the **MARITIME PROVINCES** and **QUEBEC** the lowest.

MEDIAN* relating to a value or quantity lying at the midpoint of observed values or quantities.

Source: Statistics Canada

14% of Canadians were in LOW-INCOME households

Children, young adults, pre-retirees and older seniors were more likely to be in low-income households.



LOW-INCOME: The income below which a family is likely to spend 20 percentage points more of its income on food, shelter and clothing than the average family.

Income among partners in Canada

In **96%** of couples, both partners received income.

32% Couples with fairly equal incomes

17% A female partner had higher income

51% A male partner had higher income

Source: Statistics Canada, 2016 Census of Population

STATS 101:

What is Labour Market Information?

LMI is the information that we need as individuals and organizations to make decisions about the labour market. It is information and data about the supply and demand for workers and jobs within communities.

Source: Guide To Using Labour Market Information In Ontario, Ministry of Training, Colleges and Universities – 2005

LMI can be overwhelming and confusing. Learning what it is and how to use it can help you find a job. LMI includes information on occupations, training requirements and employment opportunities in industries that are growing.

WHO NEEDS LMI?

- Students making career choices
- Job seekers
- Employers
- Educators
- Community agencies
- Government

Questions or concerns? Feel free to contact us at info@thelabourmarketgroup.ca

T. 705.474.0812
Toll Free 1.877.223.8909
F. 705.474.2069

101 Worthington St. East
Suite 238
North Bay, Ontario

1 College Dr.
Parry Sound, Ontario

The Labour Market Group is funded by



TOP 5 OCCUPATIONS IN NIPISSING AND PARRY SOUND DISTRICTS:

Highest Earnings

NIPISSING

	OCCUPATION TITLE	2016 (AVG. PER HOUR)
1	Air pilots, flight engineers & flying instructors	\$41.32
2	Power engineers & power systems operators	\$38.49
3	Managers in social, community & correctional services	\$38.39
4	Nursing co-ordinators & supervisors	\$37.38
5	Police officers (except commissioned)	\$37.37

PARRY SOUND

	OCCUPATION TITLE	2016 (AVG. PER HOUR)
1	Elementary school & kindergarten teachers	\$40.72
2	Police officers (except commissioned)	\$37.37
3	Secondary & elementary school teachers & educational counsellors, n.e.c.	\$36.27
4	Registered nurses & registered psychiatric nurses	\$35.73
5	Construction millwrights & industrial mechanics	\$30.68

Most Employed

NIPISSING

	OCCUPATION TITLE	2012 JOBS	2016 JOBS
1	Registered nurses & registered psychiatric nurses	911	1,119
2	Transport truck drivers	589	780
3	Social & community service workers	479	690
4	Administrative officers	358	667
5	Underground production and development miners	405	578

PARRY SOUND

	OCCUPATION TITLE	2012 JOBS	2016 JOBS
1	Retail salespersons	467	491
2	Food counter attendants, kitchen helpers & related support occupations	286	358
3	Elementary school & kindergarten teachers	259	261
4	Secondary & elementary school teachers and educational counsellors, n.e.c.	233	257
5	Janitors, caretakers & building superintendents	242	250

Source: OMAFRA/EMSI Analyst

NOW AVAILABLE

2017 employerone SURVEY



Are you experiencing workforce challenges?

Complete the **EmployerOne** survey on-line **TODAY**.

www.thelabourmarketgroup.ca

