



## IN THIS EDITION

2017 Distribution of Employer Size Yearly Comparisons

Labour Force Information Highlights – Canada

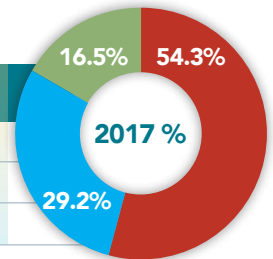
Workplace Trends in 2016 and 2017 (Forbes Online)

Agriculture Industry in Workers and Roles – Nipissing and Parry Sound

## 2017 Distribution of Employer Size Yearly Comparisons

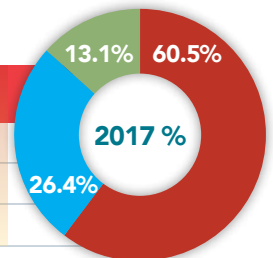
### NIPISSING DISTRICT

BUSINESS SIZE	JUNE 2013	JUNE 2015	JUNE 2017	5 YEAR CHANGE	% CHANGE
Small (1-99)	2,591	2,442	2,358	-233	-9.0%
Medium (100-199)	1,362	1,296	1,270	-2	-6.8%
Large (200+)	749	727	715	-2	-4.5%



### PARRY SOUND DISTRICT

BUSINESS SIZE	JUNE 2013	JUNE 2015	JUNE 2017	5 YEAR CHANGE	% CHANGE
Small (1-99)	1,501	1,412	1,425	-76	-5.1%
Medium (100-199)	650	618	623	1	-4.2%
Large (200+)	300	302	308	1	2.7%



Source - Statistics Canada

## VACANCY REPORT AUGUST 2017

TOTAL NUMBER OF JOB POSTINGS

Nipissing 460

Parry Sound 105

TOP INDUSTRY WITH VACANCIES

Nipissing

Health Care & Social Assistance (20.7%)

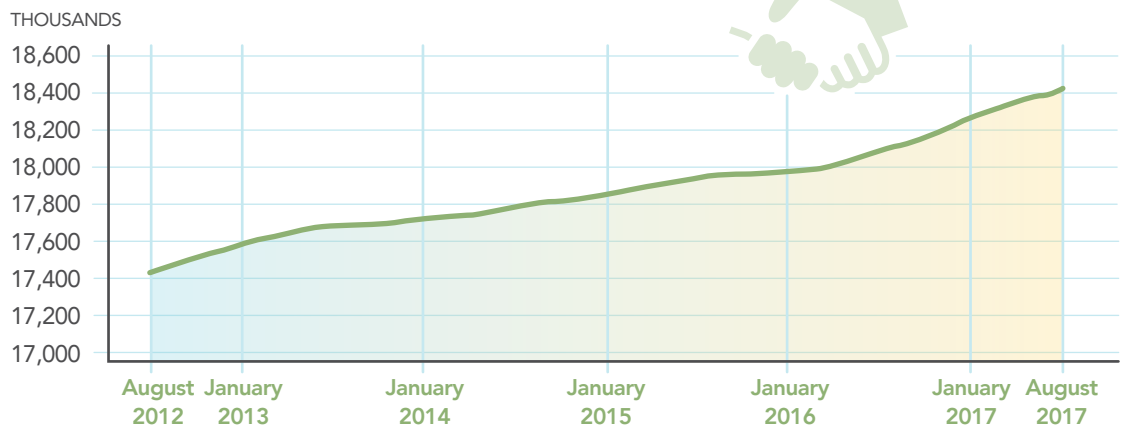
Parry Sound

Retail Trade (17.1%)

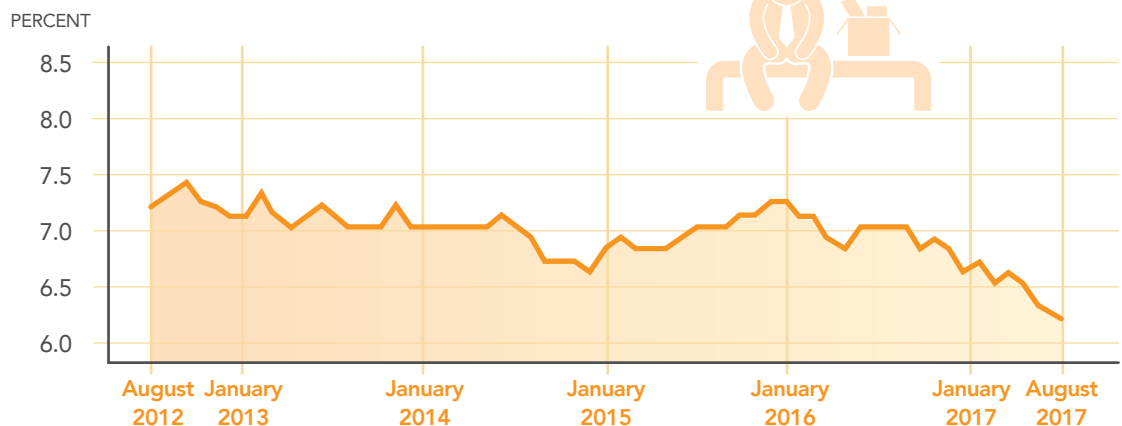
To view the full report, visit our website [www.thelabourmarketgroup.ca](http://www.thelabourmarketgroup.ca)

## Labour Force Information Highlights – Canada

### Employment Rate, Canada, Seasonally Adjusted



### Unemployment Rate, Canada, Seasonally Adjusted



Source - Statistics Canada

T. 705.474.0812  
Toll Free 1.877.223.8909  
F. 705.474.2069

101 Worthington St. East  
Suite 238  
North Bay, Ontario

The Labour Market Group is funded by





While Opportunities for Advancement ranks near the top of what candidates look for in a new job – **ONLY 11%** of people are actually promoted within a company.



**88.5%** of people have to change employers in order to move up to a higher level position.

Across industries, it takes people an average of

**12 years**

(4-5 jobs at 3-4 different employers with 4 job titles) to move from an entry-level position to the rank of supervisor or above.

Workopolis Canada

Questions or concerns? Feel free to contact us at [info@thelabourmarketgroup.ca](mailto:info@thelabourmarketgroup.ca)

T. 705.474.0812  
Toll Free 1.877.223.8909  
F. 705.474.2069

101 Worthington St. East  
Suite 238  
North Bay, Ontario

1 College Dr.  
Parry Sound, Ontario

The Labour Market Group is funded by



## Workplace Trends in 2016 and 2017

### WORKPLACE TRENDS IN 2016

- 1 The acceptance of boomerang employees and the challenges for job seekers.
- 2 The leadership gap will start being filled as boomers retire in numbers.
- 3 Workplace flexibility becomes the biggest topic of conversation.
- 4 Wearable technology is taken more seriously and disrupts business as usual.
- 5 Companies get serious about office design and use it as a way to increase collaboration and attract top talent.



### WORKPLACE TRENDS IN 2017

- 1 Companies focus on improving their candidate and employee experiences.
- 2 The blended workforce is on the rise.
- 3 Annual performance reviews evolve into more continuous reviews.
- 4 Millennials meet Generation Z in the workplace.
- 5 Augmented and virtual reality revolutionize recruiting and training.

Forbes Online

## Agriculture Industry in Workers and Roles NIPISSING AND PARRY SOUND

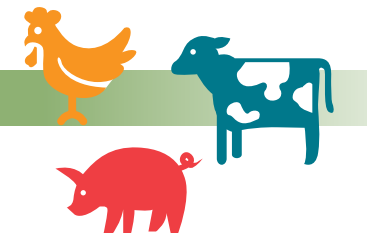
### EMPLOYMENT FIGURES BY EMPLOYEES (Not Including Self-Employed)

	NIPISSING		PARRY SOUND	
	2012	2016	2012	2016
Farms	111	121	111	121
Support Activities for Farms	51	55	51	55
<b>Industry Totals</b>	<b>162</b>	<b>176</b>	<b>162</b>	<b>176</b>



### EMPLOYMENT FIGURES BY SELF-EMPLOYED

	NIPISSING		PARRY SOUND	
	2012	2016	2012	2016
Farms	141	126	141	126
Support Activities for Farms	8	14	8	14
<b>Industry Totals</b>	<b>149</b>	<b>176</b>	<b>149</b>	<b>140</b>



### TOP OCCUPATIONS IN AGRICULTURE (Combined)

NIPISSING	2012	2016	0%	% SHARE OF JOBS IN INDUSTRY	50%
0821 - Managers in Agriculture	109	102		32.3%	
8431 - General Farm Workers	87	79		24.9%	
7511 - Transport Truck Drivers	10	15		4.8%	
832 - Nursery and greenhouse Workers	23	12		4.0%	
<b>Industry Totals</b>	<b>206</b>	<b>196</b>		<b>61.9%</b>	

PARRY SOUND	2012	2016	0%	% SHARE OF JOBS IN INDUSTRY	50%
0821 - Managers in Agriculture	180	176		46.4%	
8431 - General Farm Workers	72	47		12.3%	
832 - Nursery and greenhouse Workers	4	11		2.9%	
<b>Industry Totals</b>	<b>256</b>	<b>234</b>		<b>61.6%</b>	

Source - Statistics Canada