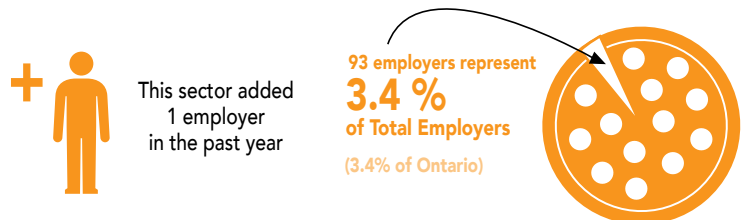


NIPISSING	Number of Employers
2008	176
2009	177
2010	187
2011	191
2012	189

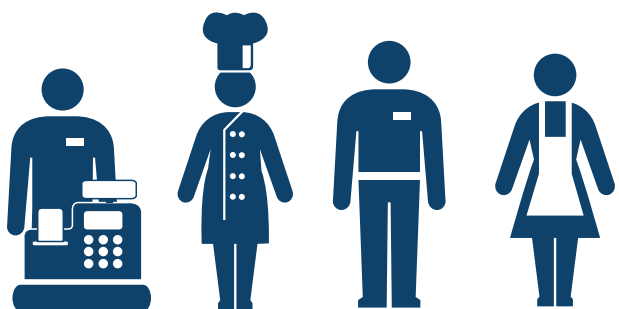
PARRY SOUND	Number of Employers
2008	111
2009	109
2010	107
2011	92
2012	93

#5 Year over year, this sector has had the fifth largest number of employers in the district

#8 Year over year, this sector has had the eighth largest number of employers in the district



FOOD SERVICES & DRINKING PLACES



NAICS 722

✓ This subsector is made of businesses primarily engaged in preparing meals, snacks, and beverages for immediate consumption.

Leased food service locations in hotels, shopping malls, airports, and department stores are included

It does not include food service activities such as hotels, civic & social associations, amusement & recreation parks, and theaters.

✗ Establishments that primarily prepare and/or deliver food for the needy are excluded (62421, Community Food Services)

Subsectors:

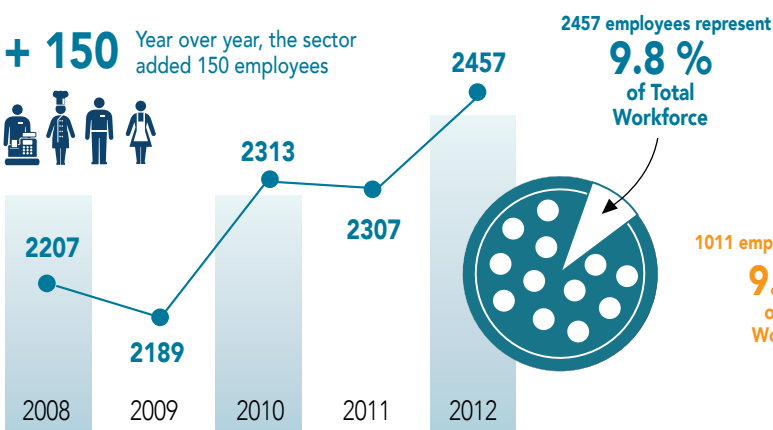
- 7221 Full-Service Restaurants
- 7222 Limited-Service Eating Places
- 7223 Special Food Services
- 7224 Drinking Places (alcoholic beverages)

Major Occupations Within Industry:

- 664 Food Counter Attendants, Kitchen Helpers and Related Occupations
- 645 Occupations in Food and Beverage Service
- 624 Chefs and Cooks
- 063 Managers in Food Service and Accommodation
- 621 Sales and Service Supervisors
- 661 Cashiers

SINGLE LARGEST amount of employees in Small + Medium Enterprises in Nipissing & Parry Sound districts

NIPISSING	Number of Employees
-----------	---------------------



PARRY SOUND	Number of Employees
-------------	---------------------

